



Hair Shutters™

american quality • timeless beauty

custom engineered
superior design for a precise fit
warranted for the life of your home



Your home

is much more than a residence. It is a reflection of your lifestyle.

It is an environment that conveys a spirit of life and enthusiasm, of comfort and relaxation. It is a vision of serenity, traced by the soft rays of an amber sunset playing across the arm of your favorite chair.

When you enhance your home with O'Hair Shutters™, you are adding much more than elegance and beauty. You are introducing the more tangible benefits of privacy, light control and energy savings, and you are rewarded with the satisfaction that can only be found in a product of genuine quality.

Our shutters are constructed from responsibly harvested American hardwood and provide the warmth and ambience that can only be found in precisely milled, beautifully finished natural wood. They are custom designed for each individual window, built to your specifications, and carefully finished to complement your décor. Your shutters are then installed by highly experienced professionals, assuring precise integration into the architecture.

The result is the transformation of your home, the enhancement of your lifestyle, and the contentment of knowing that the shutters you have selected are the very best, custom made for you and for you alone.



"If you ignore beauty, you will soon find yourself without it... If you invest in beauty, it will remain with you all the days of your life." – Frank Lloyd Wright

louvers

available in spacings of 1.5" to 5" and in panel widths of up to 50"



Townhouse

Townhouse 1.75" louver, 1.5" spacing up to 30" panel width

Designed for a traditional "cottage look", the narrow 1 1/2" louvers of the Townhouse series are ideal for multiple panels across a single window. The optional bi-fold hinging of four-panel configurations allows for convenient, more compact folding.

The Townhouse line is also perfect for café designs, wardrobes and saloon doors, adding appeal to environments where subtlety is preferred over broad louver designs. As with all our louver spacings, the Townhouse can be combined with raised panels for a more formal look.



Plantation

Plantation 2.25" louver, 2" spacing up to 40" panel width

The Plantation series features the original 2" spacing wide-louver design. The scale of the 2 1/4" louvers accommodates small to medium size panels, and is commonly used in pairs across a 3 to 4 foot window. The addition of a divider rail is useful if a privacy line is desired.

This slat spacing, when combined with such options as a multi-folding design can provide a look ranging from American contemporary to European chic and from country casual to the exotic.



Fairway

Fairway 3.25" louver, 3" spacing up to 50" panel width

With its generous 3 1/4" louvers, the Fairway is the most flexible of louver designs. Its 3" spacing is perfect for wide and tall configurations, but not overpowering in smaller panels. The 1 1/8" louver projection is at home in wood windows and in French doors with divided lights.

The comfortably spaced O'Hair Fairway series, with its balance of spacing, proportion, and view ratio, is our most popular design.



The 3 inch Fairway™ offers a visual texture that works well in all configurations

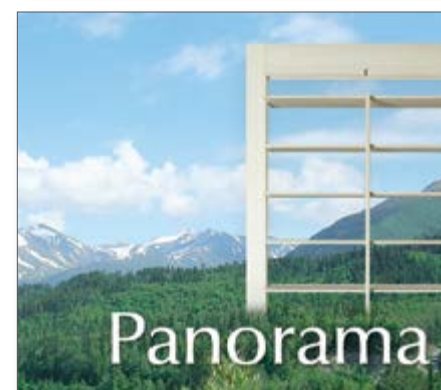


Oceanview

Oceanview 4.25" louver, 4" spacing up to 50" panel width

The Oceanview line with 4 1/4" louvers delivers a strikingly bold, open look. The 4" louver spacing complements taller-than-average windows which, due to our arrow-straight tilt rods, feature excellent louver control even in continuous rods scaled to the tallest panel.

As with our other offerings, the Oceanview is available in a split tilt option, providing privacy below with abundant light above.



Panorama

Panorama 5.25" louver, 5" spacing up to 50" panel width

The O'Hair Panorama series with its spaciouly distributed deep-profile louvers sets the trend in wide louver shutter styling. The 5 1/4" louvers and generous 5" spacing provide a stunning view ratio of 93%.

The Panorama excels in tall windows in which the command of light and view is a priority. Designs using wide panels, uninterrupted by midrails, provides maximum light with a breathtaking view.

genuine american hardwood • slim profile design • ultra-stable book matched construction • the widest warranted shutter panels available

styles

Natural grain Sandbrushed™ finish, Horizon™ tilt

a variety of styles and enhancements



Pattern Horizontals™

Pattern Horizontal™ shutter panels feature an industry first in contour design that allows all louvers, including fractional top louvers, to operate in full rotation.

Pattern Horizontals™ are available in a wide range of shapes, including various arched and angled designs, and in all louver sizes. You can also enjoy the full range of light control and view with center tilt or Horizon™ tilt system.

For in-depth information, see page 8.



Horizon Tilt™

The Horizon Tilt™ option, which is available in Fairway, Oceanview and Panorama louver spacings, features a view uninterrupted by a conventional center tilt rod. Instead, the side-mounted tilt-rods overlay the shutter frames on closure, providing enhanced privacy and light control.

Horizon Tilt™ is available with either a single tilt rod per panel for a streamlined view or twin tilt rods for maximum privacy.



Quarterburst™

Semicircular windows are a popular feature of many custom homes, adding elegance to formal rooms and an aire of romance to baths and bedrooms. The O'Hair Quarterburst™ offers a superior design with a concealed linkage that offers synchronized rotation to create just the right ambiance.

They are available in louver spacings of 2", 3" and 4", and in a range of diameters from 26" up to 100". The Quarterburst™ is perfectly paired with our rectangular panel designs.



This Horizon Tilt™ Pattern Horizontal™ unit features our exclusive side-mounted tilt rods. (Single tilt rod design shown.) All O'Hair panel configurations include the option of split-tilt for upper / lower louver controls, or continuous full-height tilt rods.



Sandbrushed™

Resembling the smoothly rippling sands of a pristine beach, the O'Hair Sandbrushed™ surface accentuates the beauty of real wood with the added dimension of a natural grain contour.

Our exclusive brushing process brings out subtle highlights and shadows, adding an ever-varying texture. In addition to emphasizing the grain in stained finishes, it provides visual interest to painted finishes that can only be found in genuine wood shutters.

For in-depth information, see page 10.



GrainSelect™

A premium stained finish reveals and enhances the natural beauty of the wood. Extreme variations in grain pattern and hue between panel components can detract from the aesthetic. Rather than allowing random variations, we combine computer selection with hands-on assembly to create a pleasing arrangement of visual textures. GrainSelect™ is a standard feature with all of our stained finishes.

a range of styles • fully synchronized louvers • unmatched light control • smooth or natural grain • panel sizes up to 50" x 133"

features in-depth

Pattern Horizontals™

precisely contoured and fully synchronized for a full range of control

The popularity of arched windows in upscale homes demands a window covering to compliment and enhance the arched aesthetic. A well-designed shutter can add a level of beauty and practicality to these openings that is superior to other treatments. The industry best in arched shutter design is Pattern Horizontals™ from O'Hair.

Pattern Horizontals™ represent the first and only contour design allowing full rotation of all louvers, including fractional top louvers. The resulting control of light and view is unequalled. Every other design leaves some louvers inoperable. Every other contour design limits the rotation of operable louvers.

Each panel is tailored to a precise increment and all components are milled using computer controlled machining for accuracy and repeatability. Critical strength features, standard to all shutter panels from O'Hair, are thoroughly integrated for decades of trouble-free service (see page 12). Pattern Horizontals™ are not only unique in beauty and functionality; they are peerless in strength.

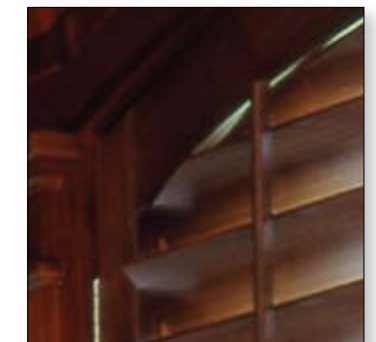
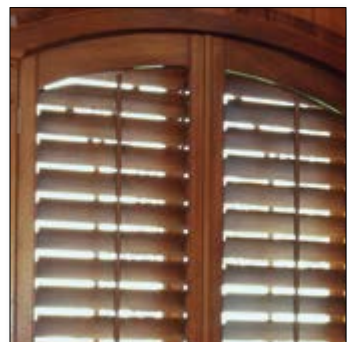
Pattern Horizontals™ are available in popular paint and stain finishes, in five louver spacings, with Horizon-tilt™ as well as center-tilt, and in Sandbrushed™ and Grainselect™ surfaces.



Discrete rear linkage provides synchronization for even the top louver.



O'Hair Pattern Horizontals™ are precisely contoured to the opening, offering full, top-to-bottom synchronised louver control.



pattern horizontals™ – the very best in american made, custom d esigned, precision sculpted, fully synchronized patterned shutters

features in-depth

Sandbrushed™

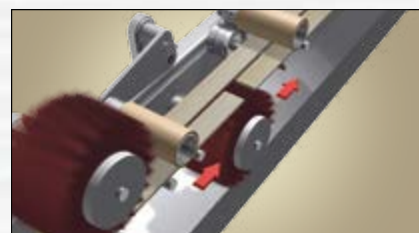
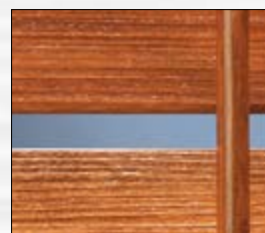
the unique O'Hair process for enhancing the natural beauty of wood

The beauty of a hardwood shutter goes beyond the elements of design and construction. The nature of the wood itself, with its innate characteristics of shifting hue and undulating pattern, is also a defining characteristic of quality.

O'Hair's exclusive Sandbrushed™ process accentuates the natural pattern of the wood with a process that uses rotating fabric brushes to bring out the contours of the grain. Unlike the far more aggressive sandblasting method, our sandbrush™ system adds a gentle relief to the surface, resembling ripples of sand on a pristine tropical beach.

The result is a finish with character and a surface that is easy to keep clean. Furthermore, as the angle of sunlight varies during the day, this creates a subtle and intriguing shift in the tone of the grain that can only be found in a Sandbrushed™ hardwood shutter.

The Sandbrushed™ process is available for all shutter styles, including center tilt panels, Horizon Tilt™, Pattern Horizontals™, Quarterburst™, and GrainSelect™. A full range of paint and stain colors is also available (see dealer for details).



Sandbrushed™ shutters as seen with a painted finish, a stained finish and a specialty finish.

The Sandbrushed™ process creates a smoothly rippling natural texture.



The Sandbrushed™ option enhances the natural features of wood grain; accenting its contours and revealing its inner beauty.



enhancing the natural grain like the smooth, rippling sands of a pristine tropical beach



quality

"Quality means doing it right when no one is looking." – Henry Ford

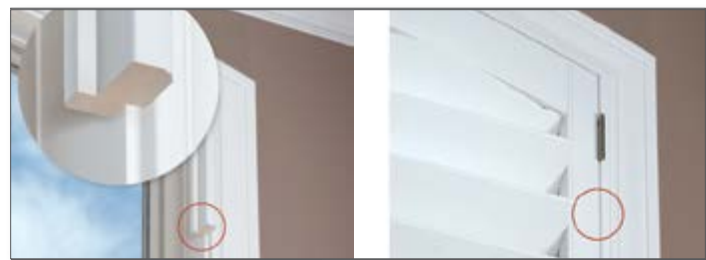
Precision With Tradition

O'Hair Shutters™ are built using the ideal blend of traditional joinery and computer-controlled milling. The precision that we engineer into our shutters, combined with time-honored methods of construction, assure the strongest and most stable hardwood shutters in the industry, resulting in decades of trouble-free service.



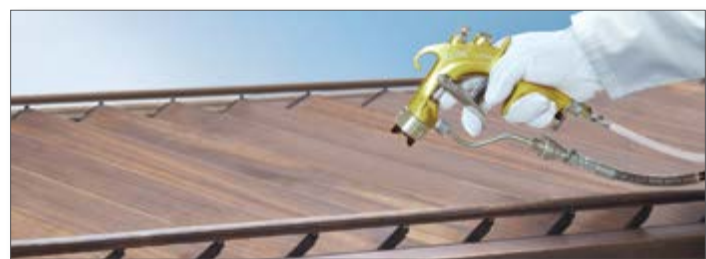
Locally Customized

Your local customizer of O'Hair Shutters™ understands the architectural details of residential construction in your area. Using his local shop for woodworking and finishing, your O'Hair dealer custom tailors shutters for each home, resulting in the look of master planning.



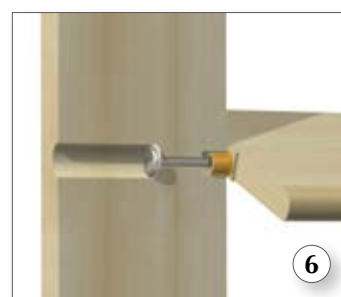
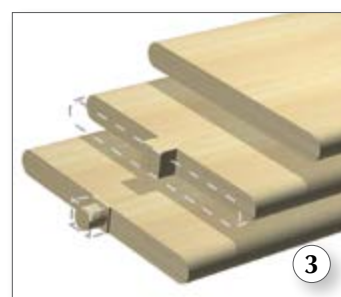
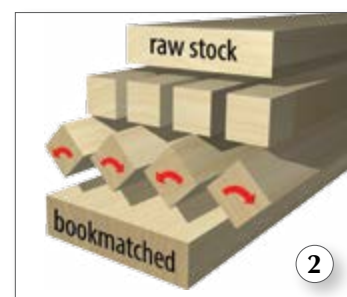
Locally Finished

Working in the local area, your customizer of O'Hair Shutters™ is familiar with the popular paint and stain finishes used by homebuilders. Equipped with his own finishing facility, he is uniquely qualified to fulfill custom paint and stain requirements for your home. No other shutter can rival this level of fit and finish.



Advanced Design

The features of our shutters include monolithic louver tenons for superior strength in a slim profile, tilt rods with continuous metal linkage, bookmatched louvers and stiles, screw-reinforced mortise-and-tenon joinery, and brass reinforced Stabilouver™ tension controls.



our unique louver design offers superior strength in a slim profile.

Built For Life

Here are a few of the features of an O'Hair Shutter:

- 1 Screw-reinforced wet-on-wet mortise & tenon joinery
- 2 Ultra-straight louvers & stiles from bookmatched stock
- 3 Monolithic louver tenons for extraordinary strength
- 4 Ultra-straight tilt rods from special heat-treated stock
- 5 Continuous tilt rod linkage for a lifetime of reliability
- 6 Brass-reinforced Stabilouver™ for adjustable tension
- 7 Homeowner-endorsed quality, life-of-home warranty*

* see warranty for details

O'Hair Shutters™ offer the level of quality in design, engineering, materials and construction that can only be found in America.

satisfaction

shutters that will last for the life of your home

Responsibly Harvested

O'Hair Shutters™ are made in the USA from genuine American hardwood that is meticulously managed by accredited foresters, assuring quality, consistency, and renewability. Our timber is harvested on family-owned land, from landowners who practice sustainable forestry and responsible conservation, leaving a proud legacy for future generations.



Responsible Manufacturing

Our shutters are produced in the most environmentally friendly shutter factory in the world. The manufacturing process begins with natural air drying at our low-humidity facility, which reduces energy consumption for kiln drying. Our exclusive milling system generates a minimum of wood waste, which is then recycled. Our solvent-free priming process produces zero emissions. Shutter packaging utilizes 99% recyclable materials. The result is a minimal environmental impact.



Responsible Dealers

O'Hair dealers are carefully vetted before coming onboard and are continuously rated by customer satisfaction surveys completed by homeowners after installation. This is the strength of our Homeowner Rated™ dealer program. To maintain this certification, dealers must receive a minimum recommendation score of 98%. This provides an unrivaled level of confidence and customer satisfaction.



Personal Responsibility

Every member of our team takes personal responsibility for the quality of their work. We maintain unusually close contact with our dealers, including remote computer access for expert hands-on assistance in designing shutters for even the most innovative installations. If this were your company, you would do nothing less. This level of commitment is not just our policy, but an integral part of the O'Hair culture.



SplitTilt™ offers the ideal blend of privacy and abundant light

Personal Satisfaction

We at O'Hair take deep personal satisfaction in what we do and when we hear the same from homeowners, this news travels quickly, bringing smiles all around.

Your satisfaction is truly our satisfaction.

The integration of shutters from O'Hair into your home has a transforming effect on your environment and a refreshing influence on your sense of contentment.

When you invest in O'Hair Shutters™ you are buying the very best in American hardwood shutters. They are beautiful, functional, and superbly crafted to last for decades.

What you want in a quality shutter is more than just an attractive window covering and the tranquil beauty that it provides. You want more than the welcoming comfort that they imbue. You want the satisfaction of knowing that you own the very best.



An eleven foot opening, featuring eight foot tilt rods (available in lengths of up to ten feet)

"Quality is never an accident. It is always the result of high intention, sincere effort, intelligent direction and skillful execution." – William A. Foster



A tastefully designed shutter can change the character of a room, transforming its mood and accentuating its ambience

O'Hair Shutters™

Dealers in O'Hair Shutters™ are expert customizers who tailor your shutters and apply the finishes in their own custom shop. Your dealer has a deep commitment to providing a superior product with excellent customer service and is customer-rated at the time of installation. These ratings are used to ensure homeowner satisfaction. Our gold rated dealers have an established track record of providing the very best in products and service, including support after installation. Our exclusive Transferable Limited Lifetime Warranty™ is good for the life of the home, not just the original purchaser. It even covers free repair components for minor damage, such as from pets (see dealer for finish and installation charges).*



About O'Hair

O'Hair Shutters, Ltd. is a family-owned, family-operated business. For three quarters of a century and across four generations, we have put our name on the line, establishing and maintaining a hard-won reputation for quality and integrity. This commitment to quality governs everything we do. As stated by Roy O'Hair in a newspaper interview way back in 1952: *"Leave the customer happy, even if you haven't made a dime on the job."*

* see warranty for details

